

JABRA EVOLVE 30

MORE THAN HEADSETS, A WORKPLACE EVOLUTION

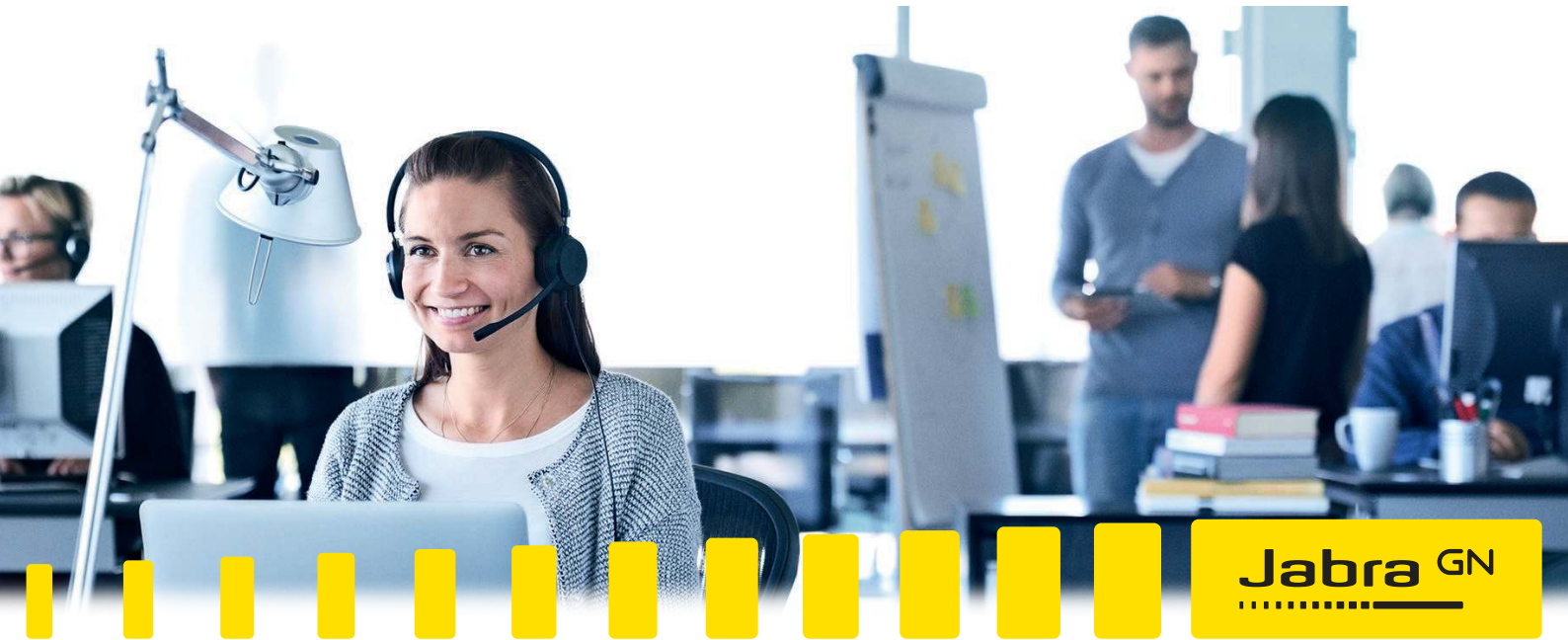
- Made for voice calls and music
- Passive noise cancellation
- USB and 3.5mm connectivity to laptop and smart device



| DETAIL | INFORMATION |
|-----------------------------------|---|
| Packaging dimensions | L 23 x W 18 x H 3.5 cm |
| Weight mono / duo | Mono headset 171.1 g, Stereo headset 142.5 g |
| What is in the box | Jabra Evolve 30 headset, pouch, warning leaflet, warranty leaflet, quick start guide, foam inlay (only available for duo), layer card, poly bag |
| Battery included | N/A |
| AC power supply | USB power supply by PC |
| Certifications | Regulatory Approvals: CE, FCC, KCC, RCM, ULIndustrial Certifications: Skype for Business, Lync, Avaya, Cisco |
| Warranty | 2 years |
| Bluetooth device | No |
| DECT device | No |
| NFC | No |
| Headset bandwidth | Wideband |
| Connection (mini jack, USB, etc.) | USB, 3.5mm jack* |
| Speaker size | D28x3.9mm |
| Speaker sensitivity | 93.6dB SPL @ 1kHz |
| Speaker impedance | 32+/-4.8Ω, @ 1.0kHz |
| Speaker max input power | Rated Input 5mW @ 0.4V, max input 10mW @ 0.56V |
| Speaker frequency range | 150Hz~7kHz, @ Output S.P.L -10dB |
| Microphone type | Electret condenser (ECM) |
| Microphone sensitivity | F=1kHz, pin=1Pa, 0dB=1V/Pa, Min=-48dB, Max=-44dB |
| Microphone frequency range | 100Hz ~ 10kHz @ 6dB |
| Speaker bandwidth music mode | Wideband |
| Speaker bandwidth speak mode | Wideband |
| Microphone bandwidth | Wideband |
| Cord length | Control cable: 95cm, HS cable: 120cm |
| Operating temperature | -10°C to + 50°C |
| Storage temperature | -30°C to + 80°C Storage temperature range: (-20°C to +35°C 6 months), (+35°C to +45°C 3 months), (+45°C to +45°C 1 month), (+60°C to +70°C 1 hour with no degradation), (+70°C to +85°C max. 1 hour < 20% degradation) |
| Power consumption speaker | Rated Input 5mW @ 0.4V, max input 10mW @ 0.56V |
| Features** | HD voice, PeakStop™ technology, UC Plug-and-play, noise canceling microphone, HiFi sound, easy call management, Jabra software applications, crystal clear sound, around the ear wearing style, passive noise cancellation, connects to multiple devices (smartphone or tablet) with a 3.5mm jack. The control unit is made with secure fit so it will stay on the table and not turn over. The control unit's large buttons and LED indicators provide quick access. |

* The 3.5mm jack is only available on the SKUs listed below. ** Phone dependent

| SKU | DESCRIPTION | EAN CODE |
|--------------|------------------------------|---------------|
| 5399-823-309 | Jabra Evolve 30 II MS Stereo | 5706991019964 |
| 5399-829-309 | Jabra Evolve 30 II UC Stereo | 5706991019971 |
| 5393-823-309 | Jabra Evolve 30 II MS Mono | 5706991019940 |
| 5393-829-309 | Jabra Evolve 30 II UC Mono | 5706991019957 |



Jabra Evolve 30

More than a headset, a workplace evolution

Evolve 30 is a professional headset designed to help you focus and improve your conversations.

Stay connected, using either USB or jack

Connect to your PC via USB or use the 3.5 mm jack for connectivity to your personal device - such as a smartphone or tablet - to work or listen to music wherever you may be.

Easy call management

In-line call controller with large buttons and LED indicators, making handling of calls and music easy. Pick up or end calls, control volume, or simply mute the line.

Plug-and-play setup

Works out of the box with all leading Unified Communications platforms. Installation is as easy as simply plugging it in.



Works with softphone, tablet and smartphone

Certified:



Reasons to choose

Jabra Evolve 30

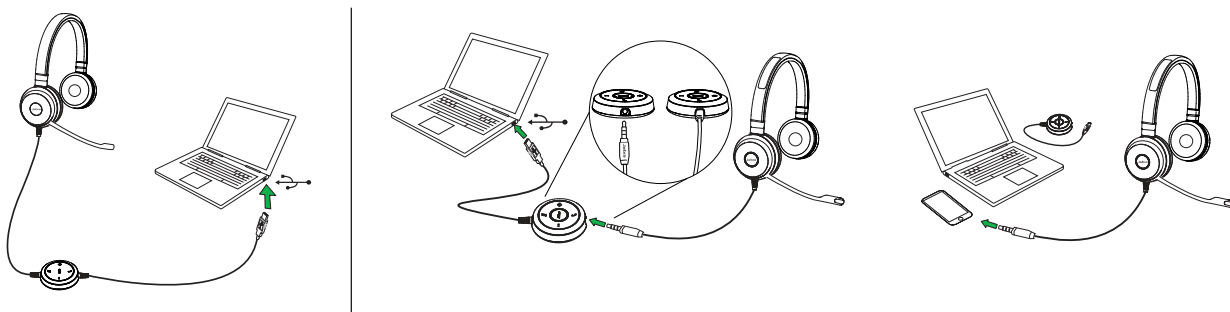
- Works with all smart devices using 3.5mm jack
- Easy call management using control unit
- Made for calls and music



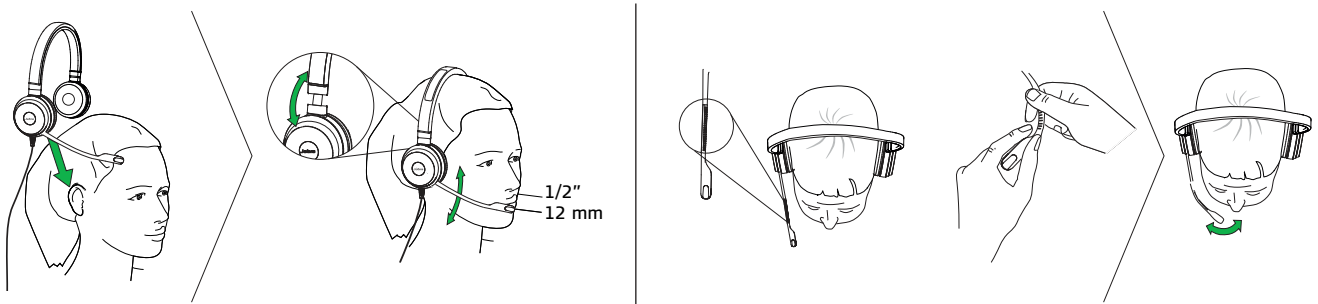
Connectivity options



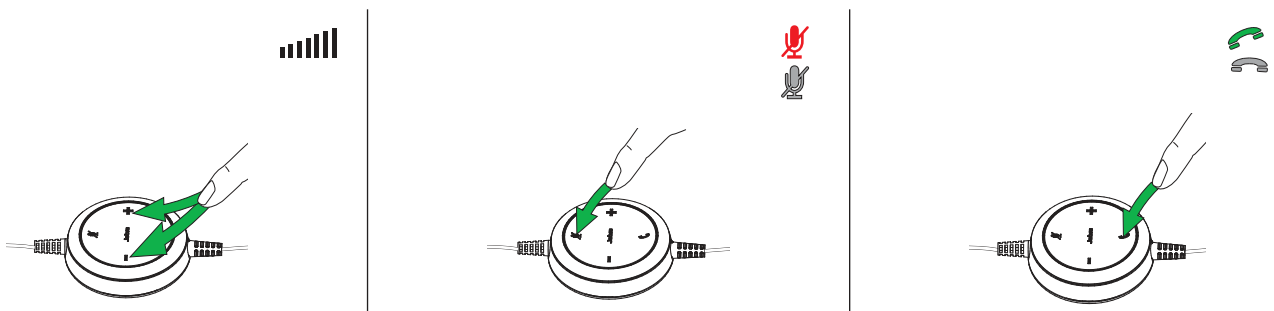
01 How to connect





02 How to wear



03 How to use



| Available variants | Variant name | Description | Detail |
|--|---|---|--|
|  Mono  Duo | Jabra Evolve 30 II UC mono Item: 5393-829-309 | Corded mono headset for VoIP softphone and smartphone | <ul style="list-style-type: none"> Optimized for Unified Communication with USB adapter that enables easy integration with your PC. 3.5 mm jack integrated into the control unit allows you to easily connect your headset to your PC, smartphone and tablet. Leatherette ear cushions. Soft pouch included. |
| | Jabra Evolve 30 II UC stereo Item: 5399-829-309 | Corded duo headset for VoIP softphone and smartphone | |
| | Jabra Evolve 30 II MS mono Item: 5393-823-309 | Certified for Skype for Business mono headset for VoIP softphone and smartphone | |
| | Jabra Evolve 30 II MS stereo Item: 5399-823-309 | Certified for Skype for Business duo headset for VoIP softphone and smartphone | |